



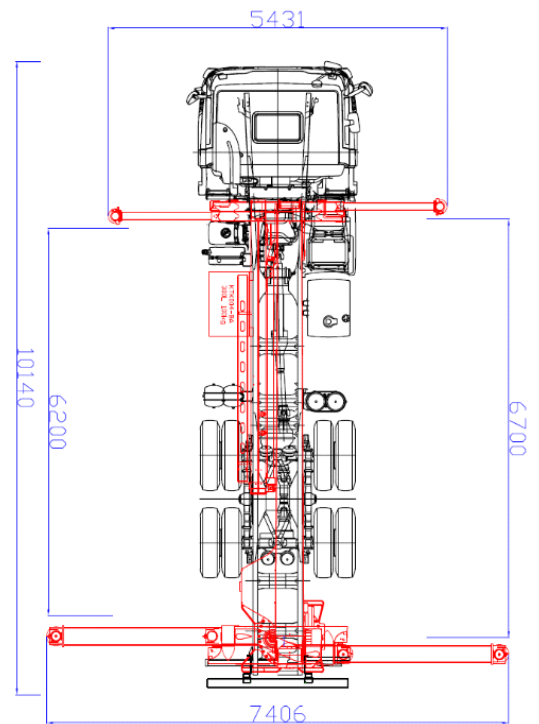
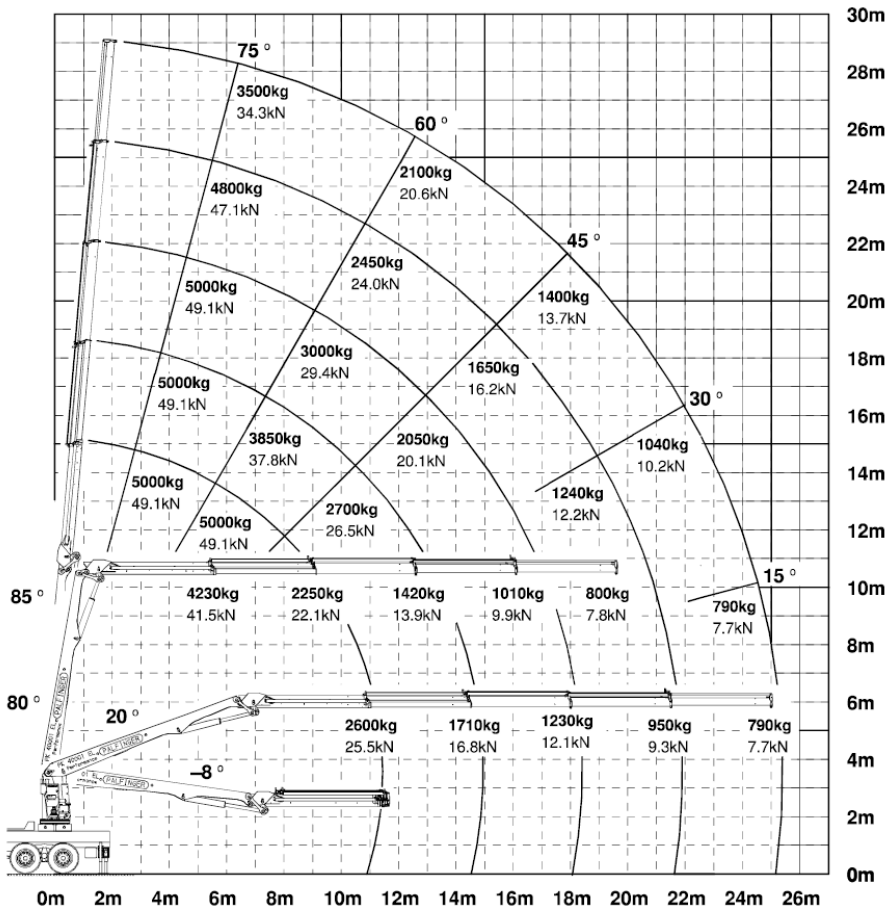
Roosens Bétons dispose de grues permettant la pose et les transports de matériaux en toute facilité.



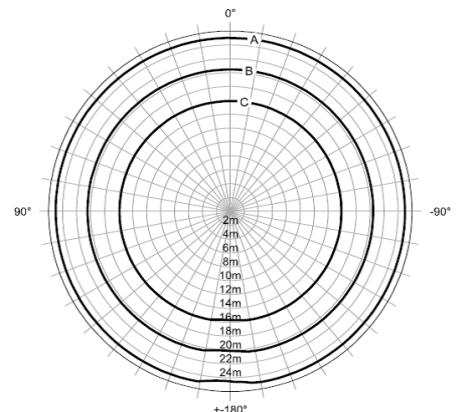
ORGANIGRAMME DES CHARGES ET ENCOMBREMENT DES GRUES

- PK40 (N°1 Réf. Roosens: 25 - N°2 Réf. Roosens: 45)

Capacité des grues pour la manutention	Charge utile	
	Belgique	France
700kg/25m - 1.000kg/20m - 1.500kg/14m	20T	16T



100% 100% 100% 100%
A: 800kg
B: 1.040kg
C: 1.540kg

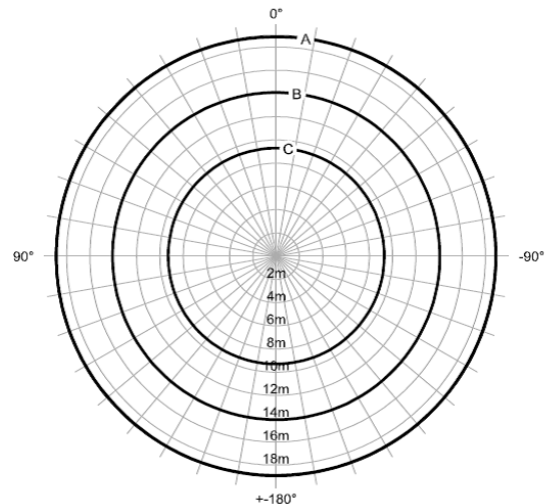
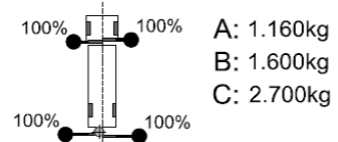
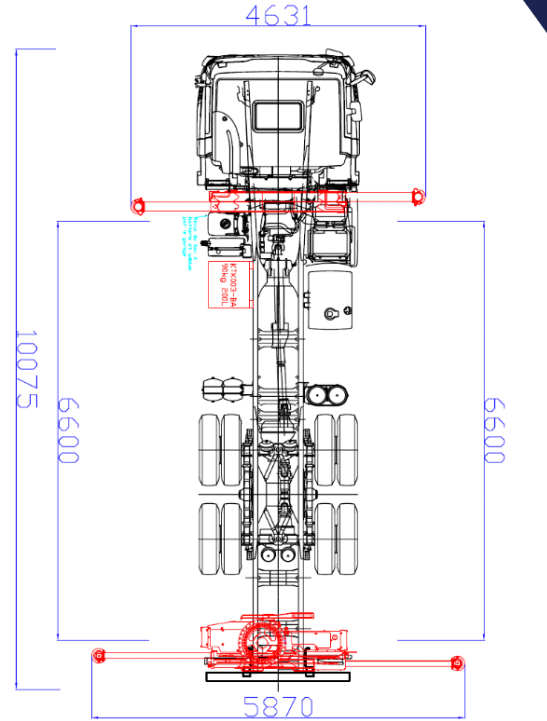
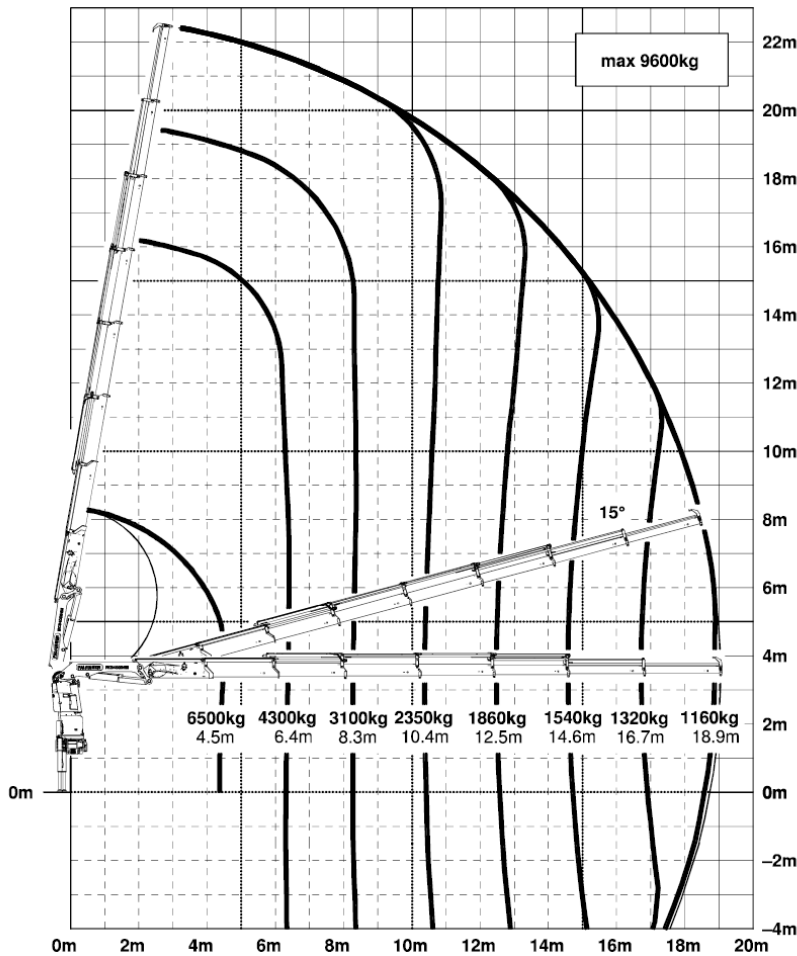


Courbe C (1540kg): 14 mètres



- PK34 (Réf. Roosens: 35)

Capacité des grues pour la manutention	Charge utile	
	Belgique	France
1.100kg/19m - 1.500kg/14m	22T500	18T



Courbe B (1600kg): 14 mètres



- Grue Grove AT 635

Capacité des grues pour la manutention	Charge utile	
	Belgique	France
Flèche de 27,5m - Capacité 30T/m	Grue automotrice	

GROVE AT 635 E
Contrepoids total de 3,0 Tonnes
Charge maximale de 0.8 T / 24m

